

Using Microsoft Flow in Your Solution

Brian Meier – Microsoft
Theresa Nistler - Microsoft



Objectives

1

Understand how to connect Microsoft Flow to your data

2

Building a Flow from a template

3

Managing a Flow

4

Building a Flow from blank

Disclaimer

This presentation is provided for informational and training purpose only. It represents Microsoft's view as of the presentation date. Microsoft cannot guarantee the accuracy of any information after the presentation. Because Microsoft must respond to changing market conditions, it should not be interpreted as a commitment on Microsoft's part. This presentation is provided "as-is".

Sample code included in this presentation is made available AS IS.

© Copyright Microsoft Corporation. All rights reserved

Getting Connected



Getting connected to your data

What is a connector

Microsoft Flow Connector

How do I connect

Business Central (SaaS)

Dynamics NAV & Business Central (on-premises)

Custom Connectors

Connecting to 'Non-Dynamics' data

200+ other services available

What is a connector?

Enables communication between Flow and any publicly exposed set of APIs

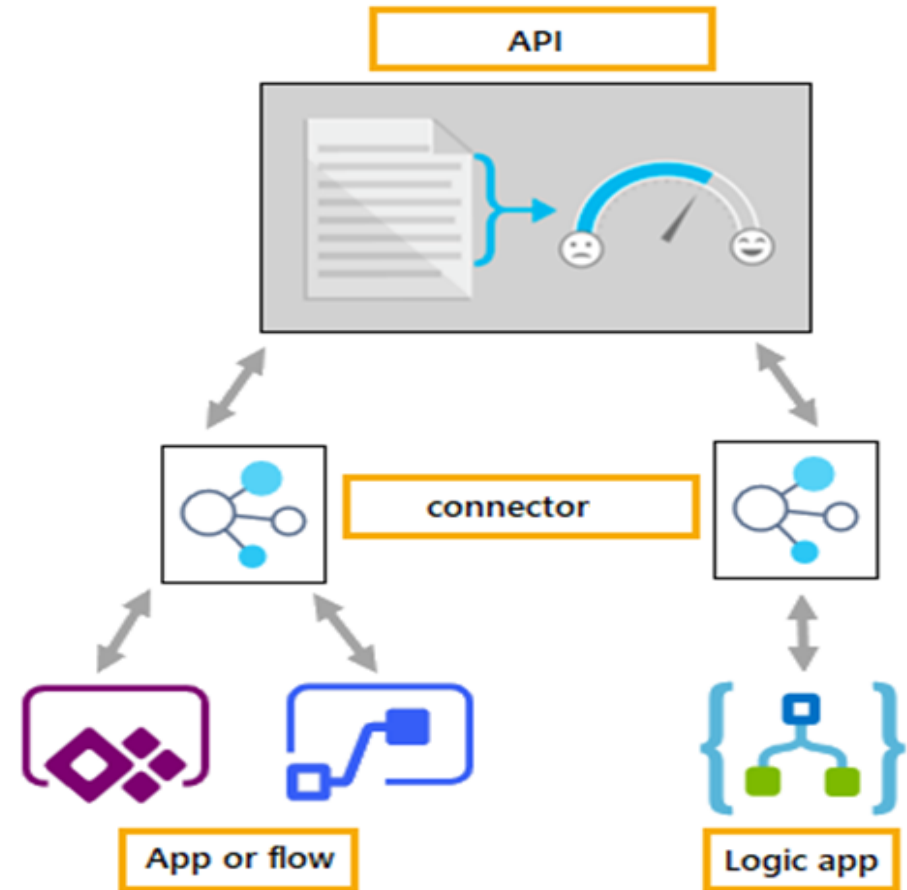
Anyone using Flow can use any of the available connectors

Over 200+ connectors available or build your own custom connector

Flow supports 'Shared Connections', PowerApps does not.

Each connector offers a set of operations classified as 'Actions' and 'Triggers'.

Polling Triggers vs Push Triggers



Business Central Connector

Connector used to enable data flow, triggers and actions between Business Central and PowerApps & Microsoft Flow

Actions support all API endpoints

Supported APIs for triggers

Customers

Vendors

Items

G/L Accounts

Sales Credit Memo

Journals

Purchase Invoices

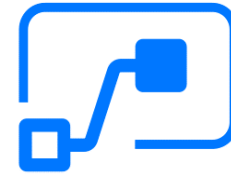
Sales Orders

Sales Quotes

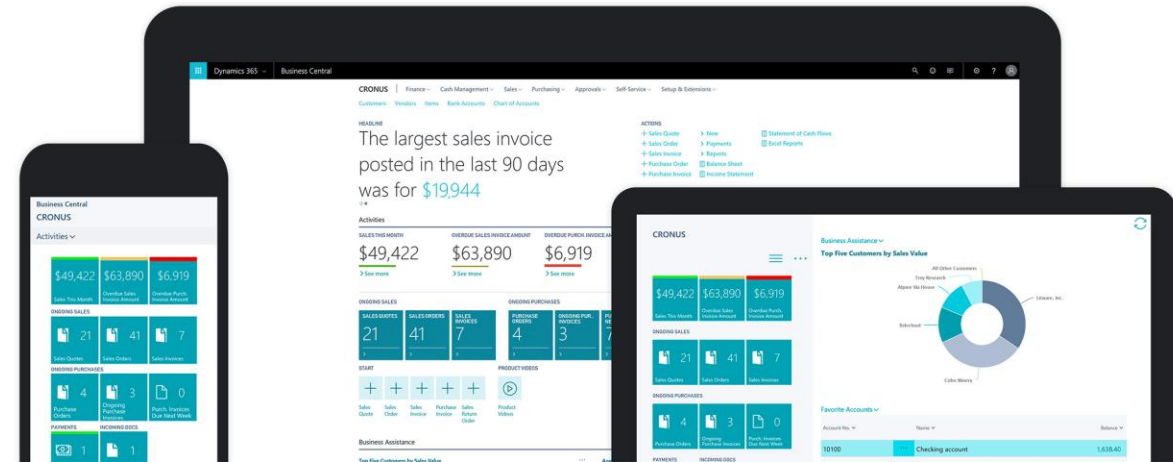
Sales Invoices

Azure AD Authentication

Support Read/Write of Business Central data



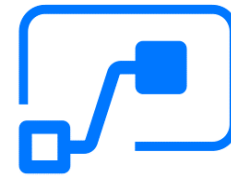
Microsoft Flow



DIRECTIONS
E M E A

Business Central (On-Premises) Connector

Connector used to enable data flow and actions between Business Central and PowerApps & Microsoft Flow



Microsoft Flow

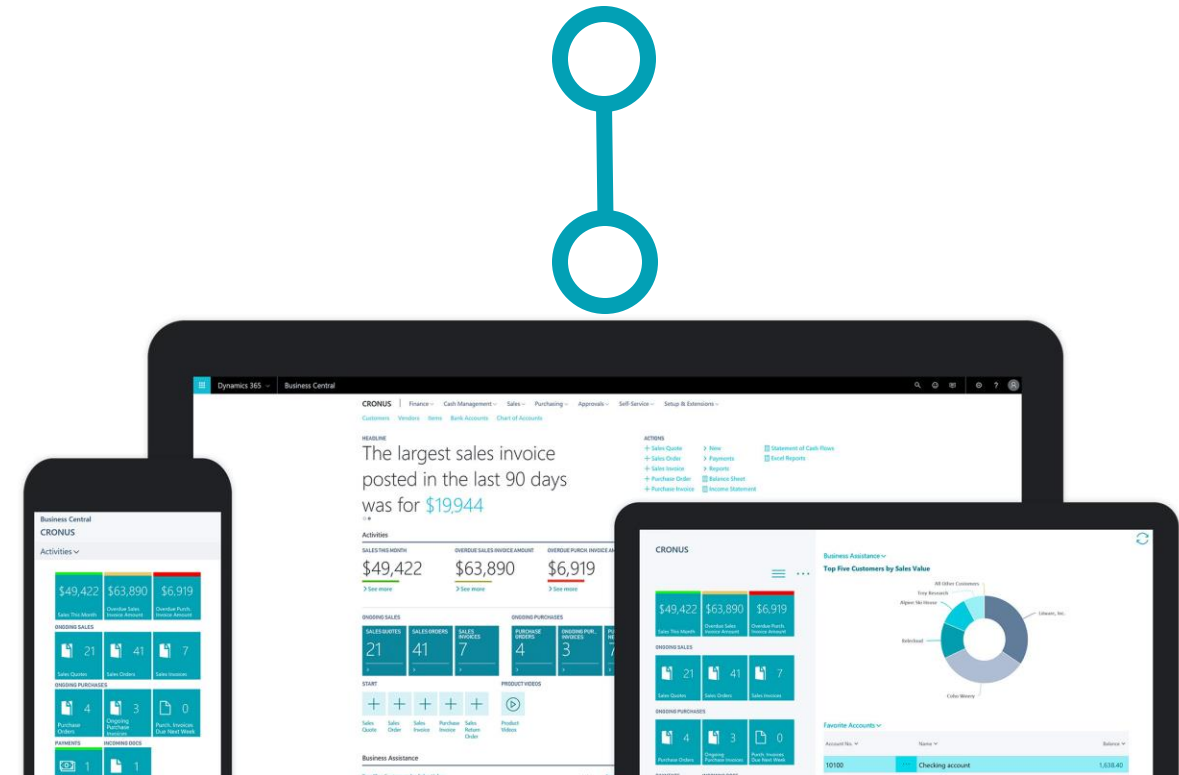
Leverages web service end points

Basic Authentication

Support Read

Support for Write functionality will depend on the web service it is using as a data source

No trigger support



Custom Connector

Build to connect to services/APIs that do not have a pre-built connector available

Custom connector have their own defined actions and triggers

Custom connectors can be created from OpenAPI definition, Postman collection or from scratch.

- OpenAPI/Swagger definition – defining the structure of your APIs
- Postman collection - help you organize and group related API requests
- Create from scratch– creating connector

The screenshot shows the 'Create custom connector' wizard in Microsoft Power Automate, specifically the 'General' tab. The connector is named 'Untitled'. The 'General information' section on the left provides instructions: 'Add an icon and short description to your custom connector. Your host and base URL will be automatically generated from the swagger file.' The main form area on the right includes an 'Upload connector icon' button with a green globe icon, a text field for 'Icon background color' (placeholder: 'A color to show behind the icon (e.g., '#007ee5')'), a text area for 'Description' (placeholder: 'Give your custom connector a short description'), a checkbox for 'Connect via on-premises data gateway' (with a 'Learn more' link), radio buttons for 'Scheme' (HTTPS selected, HTTP unselected), a 'Host' text field (value: 'api.contoso.com' with a red error icon), and a 'Base URL' text field (value: '/'). The top navigation bar shows steps: 1. General, 2. Security, 3. Definition, 4. Test. Action buttons 'Create connector' and 'Cancel' are in the top right.

Demo



Building a Flow



Microsoft Flow

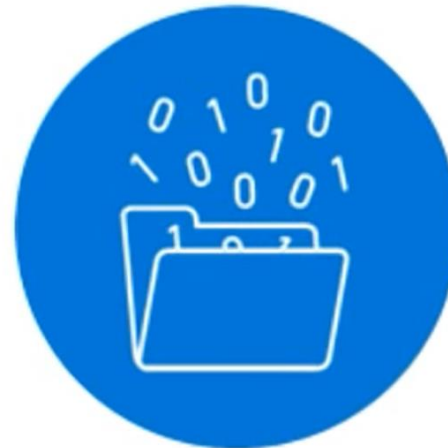
Microsoft Flow helps you work smarter by automating workflow across your apps and services



Get notifications



Synchronize files



Collect data



Automate approvals

Building a Flow

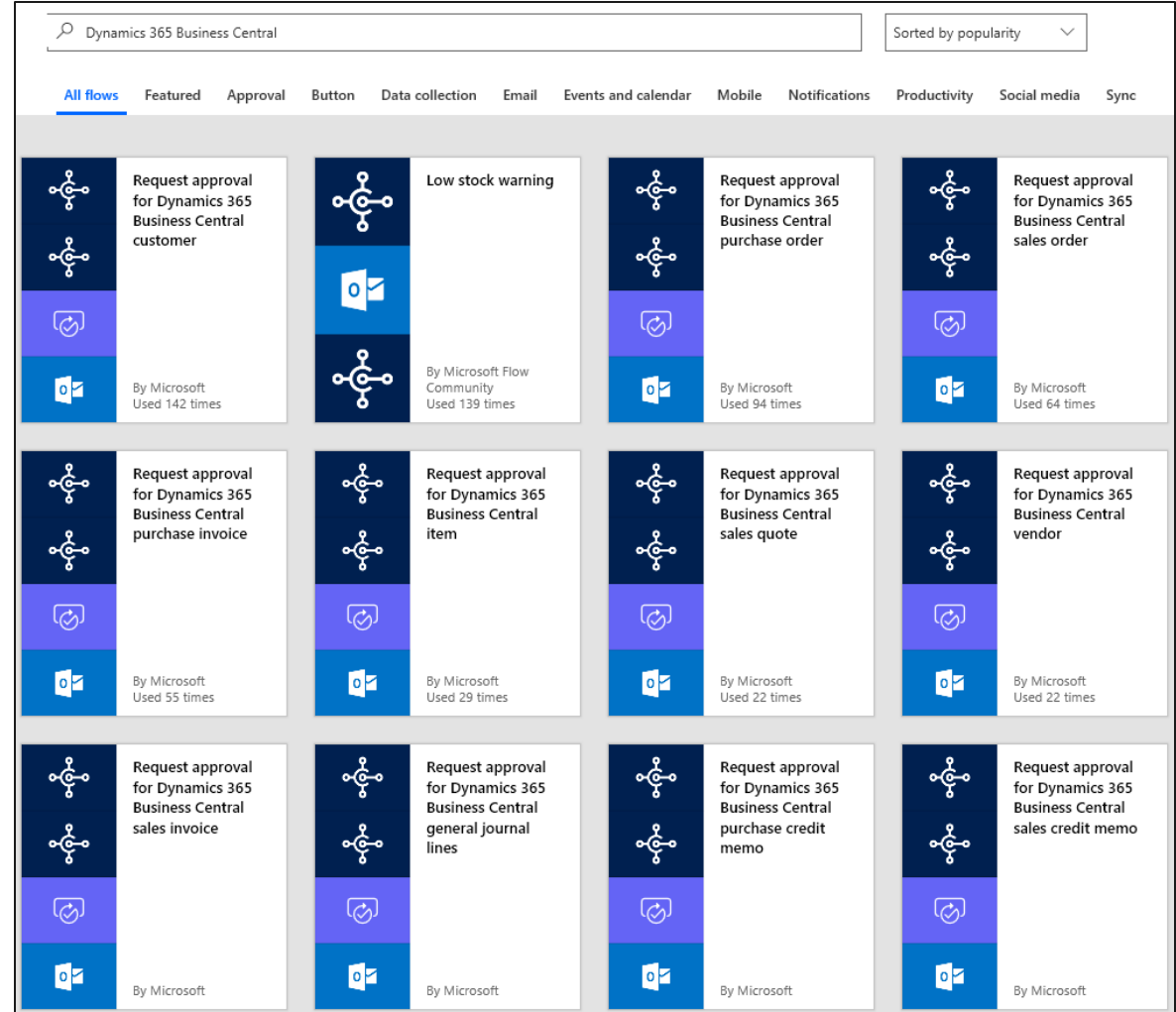
Create a Flow using templates or from 'Blank'

Flows can be personally owned or shared with the team members to manage

Connect and monitor Dynamics or 'non' Dynamics data

Easy to manage approvals

Option to create corresponding Dynamics Business Central workflow



Embedded Flow experience

Creating Flows

- Flows can be created from the Pages that they are associated with. Example: Sales Orders, Purchase Orders, Customers, etc.
- Flows can also be created at Microsoft Flow online site.

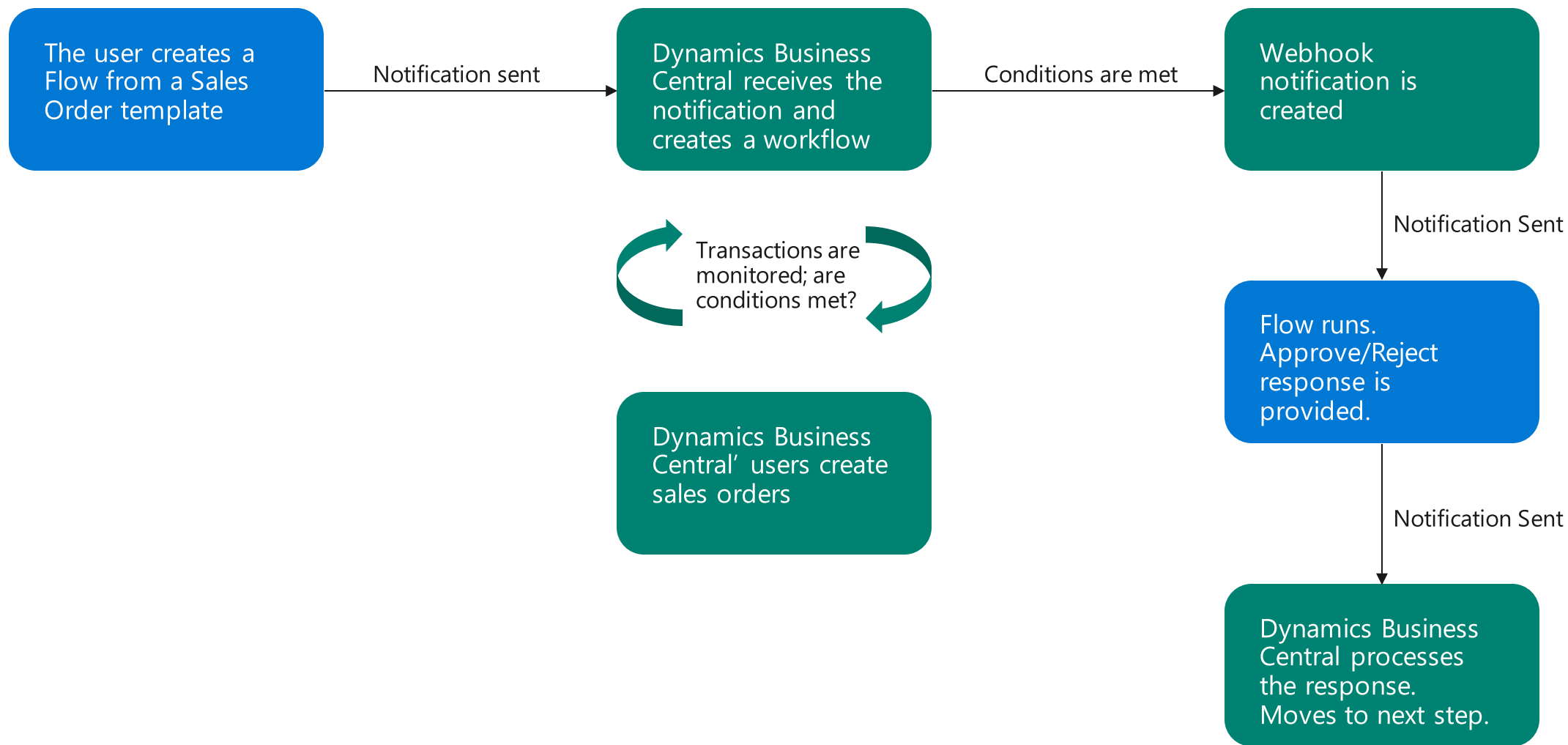
Managing Flows

- Use the 'Manage Flows' page to create or manage existing Flows
- Have access to create, edit, delete and disable a Flow. Same functionality you would have on the Flow website without having to leave the Dynamics Business Central application.

Knowing the status of a pending Flow

- The 'Flow Entry' page displays the status of all pending Flows
- A 'Pending Flow' is one where a notification was sent to Flow and Dynamics Business Central is waiting for a response.

How does this work?



Business Central Microsoft Flow templates

Request approval for Dynamics 365 sales quote

Request approval for Dynamics 365 sales order

Request approval for Dynamics 365 sales invoice

Request approval for Dynamics 365 sales credit memo

Request approval for Dynamics 365 purchase order

Request approval for Dynamics 365 purchase invoice

Request approval for Dynamics 365 purchase credit memo

Request approval for Dynamics 365 general journal lines

Request approval for Dynamics 365 general journal batch

Request approval for Dynamics 365 customer

Request approval for Dynamics 365 item

Request approval for Dynamics 365 vendor

Demo



Manage a Flow



Managing Flows within Business Central

Embedded view configuration

Business Central (on-premises) – requires Business Central application to be registered in Azure

Business Central (Saas) – no setup necessary

Managing Flows

Flow templates

Blank Flows

Modify existing Flows

Select the Flow environment you want to view

Managing Workflows created from Flow

Views web hook notifications

Retry failed web hook notifications

Cancel workflows

Demo



Create from Blank



Building a Flow from Blank

Create a Flow from 'Blank'

Connect in same manner as you did when creating a Flow template

Add a trigger (SaaS Only)

Add a condition

Save the Flow

Share with others

The screenshot displays the Microsoft Flow Builder interface. On the left, a panel titled 'Search connectors and triggers' shows a list of triggers under the 'Triggers' tab. Each trigger is represented by a blue icon with a white circuit-like symbol, followed by the trigger name and the connector 'Business Central'. The triggers listed are: 'When a record is changed', 'When a record is created', 'When a record is deleted', 'When a record is modified', 'When a customer approval is requested', 'When a general journal batch approval is requested', 'When a general journal line approval is requested', 'When a purchase document approval is requested', 'When a sales document approval is requested', 'When a vendor approval is requested', and 'When an item approval is requested'. On the right, a panel titled 'Search connectors and actions' shows a list of actions under the 'Actions' tab. Each action is represented by a blue icon with a white circuit-like symbol, followed by the action name and the connector 'Business Central'. The actions listed are: 'Create item', 'Execute action', 'Get item', 'Delete item', 'Get item types', and 'Update item'. Below the actions list, there is a link to 'UserVoice' for help. The interface is clean and modern, with a white background and blue accents.

Search connectors and triggers

Triggers Actions

When a record is changed
Business Central

When a record is created
Business Central

When a record is deleted
Business Central

When a record is modified
Business Central

When a customer approval is requested
Business Central

When a general journal batch approval is requested
Business Central

When a general journal line approval is requested
Business Central

When a purchase document approval is requested
Business Central

When a sales document approval is requested
Business Central

When a vendor approval is requested
Business Central

When an item approval is requested
Business Central

Search connectors and actions

Triggers Actions

Create item
Business Central

Execute action
Business Central

Get item
Business Central

Delete item
Business Central

Get item types
Business Central

Update item
Business Central

Don't see what you need?
Help us decide which connectors and triggers to add next with [UserVoice](#)

Demo



Call To Action

- Learn More about Microsoft Flow
- Load the Connectors
- Use a Flow Template
- Manage a Flow
- Build your own Flow Template

Learn More

Get Started with Microsoft Flow

<https://ms.flow.microsoft.com/en-us/guided-learning/>

Building a Custom Connector

<https://blogs.msdn.microsoft.com/tsmatsuz/2016/11/18/custom-api-on-microsoft-flow-and-powerapps-with-authentication/>

Related Sessions & Learning

Join us for these informative topics

Topic	Date	Time	Location
Business Central Pricing & Licensing	2018 Oct 30	14:00 – 15:00	Atlantic
A Q&A on Pricing & Licensing	2018 Oct 31	11:00 – 12:00	Atlantic
Using PowerApps & Microsoft flow, Hands-on	2018 Oct 31	14:00 – 16:00	Pacific 1


Get Started with Microsoft Flow

<https://ms.flow.microsoft.com/en-us/guided-learning/>

Building a Custom Connector

<https://blogs.msdn.microsoft.com/tsmatsuz/2016/11/18/custom-api-on-microsoft-flow-and-powerapps-with-authentication/>





We want to hear from you!

Please provide feedback
by completing your
session evaluation.

Learn more at:

<http://aka.ms/ReadyToGo>



Join the conversation!

#MSDyn365BC #ReadyToGo



Thank You